



WHO WE ARE

BLOM Maritime is a multi-disciplinary team of project managers, naval architects, piping engineers, structural engineers, surveyors and data analysts capable to execute varieties of engineering tasks. Our engineers have over 10 years experience in Offshore/Oil and Gas industrial sector. We have finalized projects connected to oil and gas in many places such as North Sea, West Africa, Mexican Gulf. Our worldwide offices location give us great oportunity to support our clients with all services in short notice of time.



OFFSHORE ENERGY

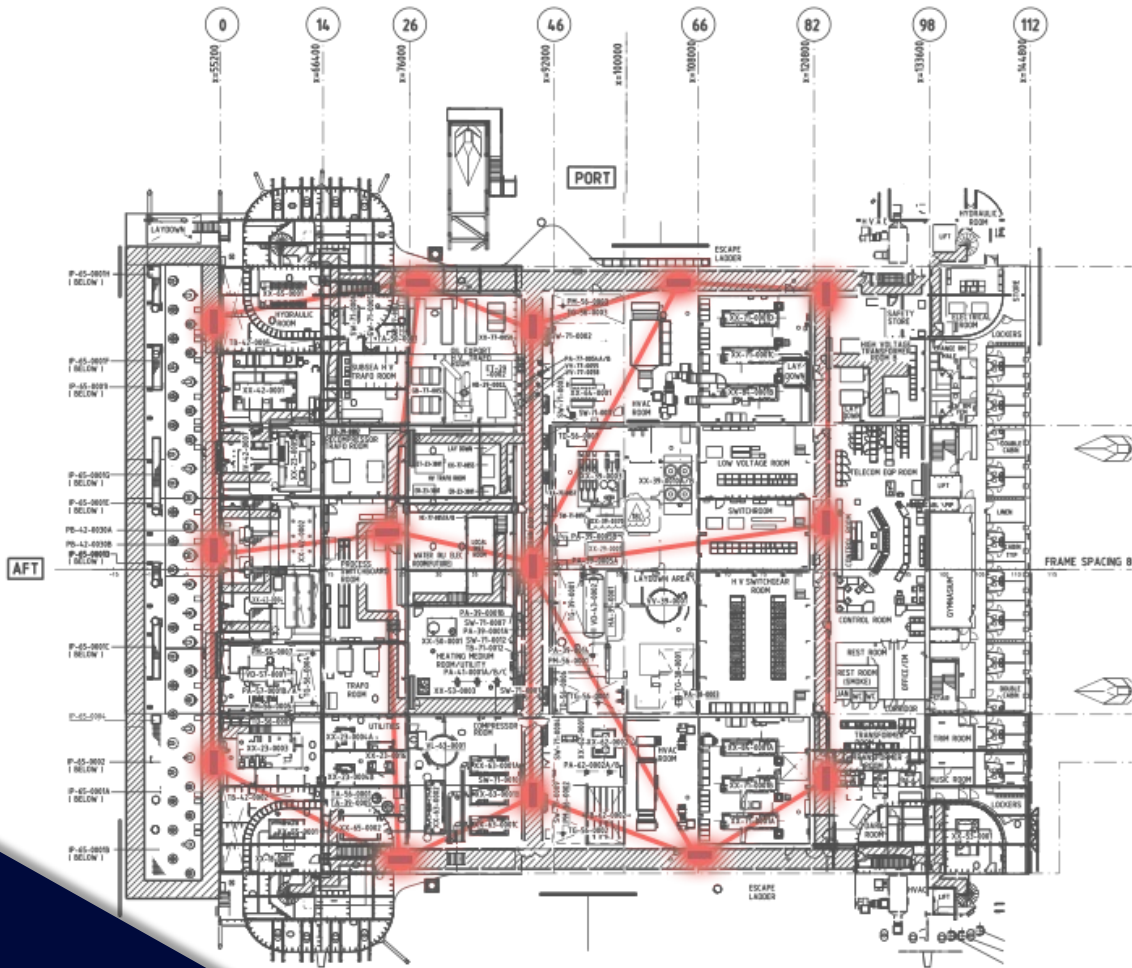
BLOM Maritime is a multi-disciplinary team of project managers, naval architects, piping engineers, structural engineers, surveyors, and data analysts capable to execute varieties of engineering tasks. Our engineers have over 10 years of experience in the oil and gas industry, carrying out projects in the most important sectors such as the North Sea, Gulf of Mexico, Middle East, and West Africa. We support our clients with a full range of services such as 3D scanning, Modeling, reverse engineering, dimensional control, and installation support. BLOM Maritime sets itself apart by an attitude of group responsibility and working together to achieve client expectations.

3D SCANNING AND TIE-INS

During scanning huge amount of data is collected. BLOM Maritime is specialized in getting the data quick, effective and most of all- accurate. Many software suppliers offer automatic modeling of scanned data. Our experience confirmed that sometimes this is not smart enough to represent object. This means that producing a good and accurate model usually requires engineering verification. To supply our customers with early insights, without additional software costs we are able to provide data in many 2D and 3D drawing formats.



MASTER GRID



Master Grid is a key solution necessary for long term projects. With Master Grid we can ensure that all measurement's (scanning, tie-ins, installation support) will be set in the same coordinates- absolutely crucial for maintenance engineers. BLOM Maritime by using state of art equipment can ensure quality of the single Master Grid point 3D position by 3mm in global measurements.

DRONE SCANNING

As a Blom Maritime we can perform point cloud acquisition from Drone. We reckon that this tool is a great opportunity to scan large amount of object in short period of time. Color point cloud can be used in NUBES to provide visibility studies or plan more precise scanning in precise ranges of facility.





REVERSE ENGINEERING

BLOM Maritime provides superior support to engineers for optimizing outcome of 3D laser scanning and dimension control. Our goal is to detect and avoid any mistakes that can occur during installation process. Our services include concept and detail engineering for piping and structure projects according NORSOK Standards.

DESIGN ENGINEERING

BLOM Maritime providing the design services at each project stage:

3D Conceptual design

- Virtual merging existing systems with new design.
- Alternative solutions discussed.
- Multiple systems could be modelled to verify their suitability on board.
- Conceptual design freeze.

Detail engineering

- Multi-disciplinary concurrent engineering.
- Pipe, Structure and electrical design.
- ISO and Updated Arrangement Drawings.
- Flow/Stress calculations.
- Drawings & documents.
- Design validation.
- Material takeoff.



DIMENSIONAL CONTROL

When a high level of accuracy is required with limited production time or hazardous circumstances to reduce risk, internal stresses or comply with class, prefabricated parts or pipes are dimensioned, checked and reported in the workshop. The crew has extensive knowledge working together with workshops to make sure all prefabs of different steel types (from carbon steel to super duplex or titanium) are up to standard and sure to fit. Most work done, according to NORSOK standards are dedicated for off-shore industry, where currently, the level of accuracy is higher.

INSTALLATION SUPPORT

Our survey engineers are specialized in challenging environment of marine and oil industry. State of the art equipment gives us the possibility to perform extremely accurate measurements on any installation. Our experience gives plenty possibilities to improve installation process with respect to cost and time efficiency. Our team members have shown to be able to take charge and place big highly complex structures even within millimeter accuracy.



DIGITAL TWIN WEB PORTAL

NUBES inhouse tool makes easy to view our design in the pointcloud from any platform with an internet connection. This allows clients to check the custom design in the scanned digital twin from their own office. It is a vital tool for visualizing the design and showing the clients exactly what will be installed. This will reduce risk, installation time and make sure there are no unexpected surprises. The platform supports multi-user access, from all major web browsers. The data is secured with security certificates and a unique password for each user. Being available from a web browser makes it possible to check the new design, in the office or at home.

<https://nubes.blommaritime.com>

CONTACT US

Marius Blom

CEO

Oslo, Norway

+47 46 800 601

marius.blom@blommaritime.com

www.blommaritime.com



BLOM Maritime

Marine | Offshore | Power